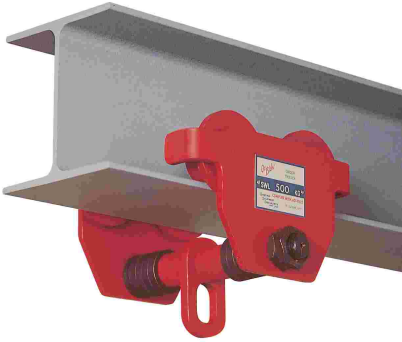


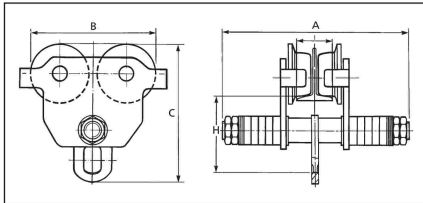
**GIRDER TROLLEYS**

**PUSH TYPE**

**Capacities: 500kg to 10 tonnes**



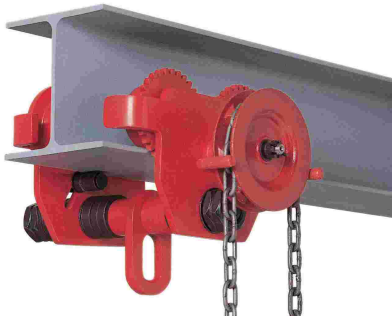
- Lightweight robust construction
- Super-quick adjustment to any monorail
- Durable baked enamel paint protection
- Precision ball bearing trolley wheels
- COMPLIES WITH AS/NZS1418.2



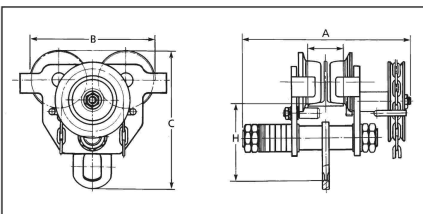
Product Code	OPT05	OPT1	OPT2	OPT3	OPT5	OPT10
Rated Capacity	0.5 t	1 t	2 t	3 t	5 t	10 t
Adjustable Beam Width mm	64-152	64-210	88-210	102-305	108-305	117-305
Clearance Dimensions mm	A	254	318	335	357	405
	B	216	260	300	345	455
	C	195	239	286	336	500
	H	110	135	161	185	280
Min. Radius Curve m	.9	1.0	1.1	1.3	1.4	1.7
Net Weight kg	8	14	21	36	51	90

**GEARED TYPE**

**Capacities: 1 tonne to 20 tonnes**



- Lightweight robust construction
- Super-quick adjustment to any monorail
- Durable baked enamel paint protection
- Precision ball bearing trolley wheels
- COMPLIES WITH AS/NZS1418.2



Product Code	OGT1	OGT2	OGT3	OGT5	OGT10	
Rated Capacity	1 t	2 t	3 t	5 t	10 t	
Adjustable Beam Width mm	64-210	88-210	102-305	108-305	117-305	
Clearance Dimensions mm	A	380	390	513	430	468
	B	260	300	345	395	470
	C	239	286	336	393	500
	H	135	161	188	220	280
Min. Radius Curve m	1.0	1.1	1.3	1.4	1.7	
Net Weight kg	18	27	43	60	105	

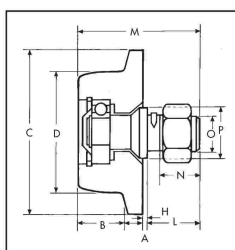
**GIRDER TROLLEY WHEELS**

**SINGLE FLANGE PLAIN TYPE**

**Capacities: 500kg to 10 tonnes**



- Trolley wheels have a machined thread for smooth operation on both R.S.J. or Universal beams
- All Steel construction
- All wheels come complete with ball bearing, axle, nut, dust cover and circlip
- Available in cast iron or fully forged



Oz Blok Product Code	Trolley Capacity on 4 wheels	Wheel Dia. D mm	A mm	B mm	C mm	Axles					
						H mm	L mm	M mm	N mm	O mm	P mm
OTW005	500 kg	58	12	27	82	3	31	72	24	M20	32
OTW01	1 tonne	75	12	28	102	3	33	76	26	M20	32
OTW02	2 tonne	90	13	32	120	3	40	88	29	M24	36
OTW03	3 tonne	110	13	36	141	3	46	99	33	M30	42
OTW05	5 tonne	120	16	38	156	3	58	115	39	M36	48
OTW010	10 tonne	150	20	43	189	3	78	143	54	M48	67